

Rediscovery of *Stomaphis radicola* Hille Ris Lambers, 1947 (Hemipter:

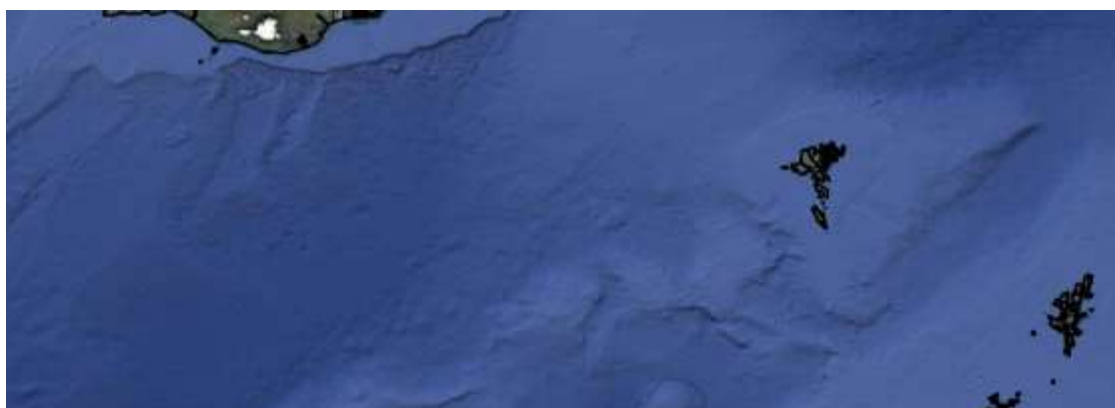
Thomas Sobc:

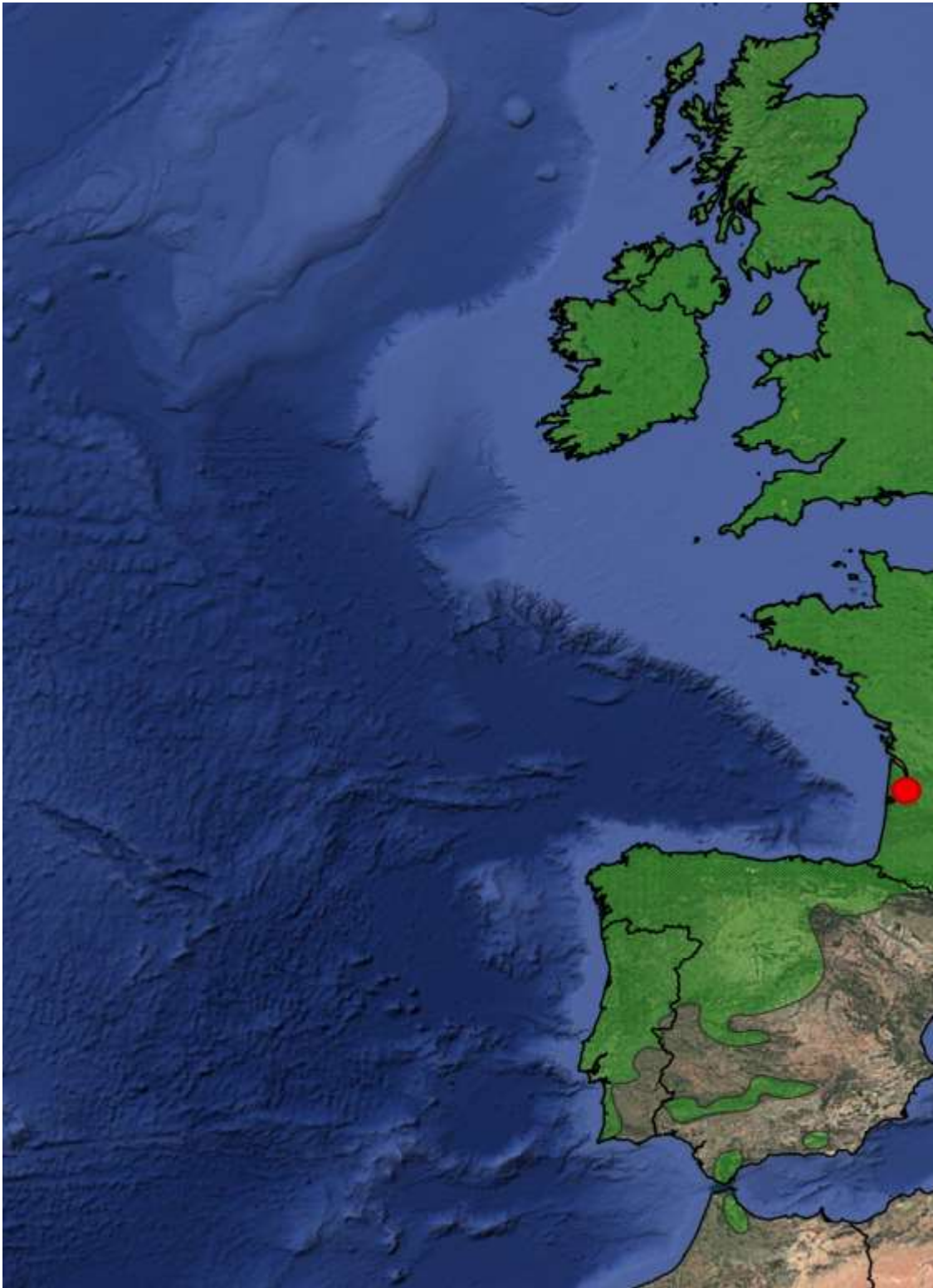
Published in: Folia Biol

SM.01. Detailed occu

Table S1. Locations where *Stomaphis radicola* has been found, together with it

Details of all occurrence localities used in th			
No.	Species	Places	Coordina latitude
1	<i>Stomaphis radicola</i>	Šúr, Svätý Jur, Slovakia	48.232338
2	<i>Stomaphis radicola</i>	Leersum, Netherlands, TYPE	52.017500
3	<i>Stomaphis radicola</i>	Kamenz, Germany	51.292056
4	<i>Stomaphis radicola</i>	Kamenz, Germany	51.293806
5	<i>Stomaphis radicola</i>	Königswartha, Germany	51.333567
6	<i>Stomaphis radicola</i>	Wittichenau, Germany	51.409500
7	<i>Stomaphis radicola</i>	Hoyerswerda, Germany	51.411000
8	<i>Stomaphis radicola</i>	Hoyerswerda, Germany	51.353194
9	<i>Stomaphis radicola</i>	Kreba-Neudorf, Germany	51.431417
10	<i>Stomaphis radicola</i>	Lohsa, Germany	51.430944
11	<i>Stomaphis radicola</i>	Lohsa, Germany	51.429889
12	<i>Stomaphis radicola</i>	Lohsa, Germany	51.429944
13	<i>Stomaphis radicola</i>	Lohsa, Germany	51.523861
14	<i>Stomaphis radicola</i>	Lohsa, Germany	51.427500
15	<i>Stomaphis radicola</i>	Spreetal, Germany	51.269500
16	<i>Stomaphis radicola</i>	Malschwitz, Germany	51.338000
17	<i>Stomaphis radicola</i>	Schwepnitz, Germany	51.388472
18	<i>Stomaphis radicola</i>	Bernsdorf, Germany	51.302389
19	<i>Stomaphis radicola</i>	Radibor, Germany	51.381056
20	<i>Stomaphis radicola</i>	St. Medard, Gironde, France	44.897904

Figure S1. Known distribution of *Stomaphis radicola* (red dots) with indication of



SUPPLEMENTARY MATERIALS FOR THE ARTICLE:

**a, Aphididae, Lachninae) in Europe – potential past and future distribution of a large but cry
zyk, Bernhard Seifert, Agnieszka Bugaj-Nawrocka, Łukasz Depa**

ogica (Kraków), vol. 73 (2025), No 3. DOI: https://doi.org/10.3409/fb_73-3.11

irrences and localities used in the model with biological observations.

s host plant and ant species.

the MaxEnt model		Biologi	
ites	Origin of the data on the distribution	voucher	collection date
longitude			
17.208056	original collection by Łukasz Depa	S133A	02.10.2011
5.414236	locus typicus	1984-340	october 1938
14.146250	collection by Thomas Sobczyk	Aphi-150	08.07.2024
14.146583	collection by Thomas Sobczyk	Aphi-171	29.07.2024
14.111520	collection by Thomas Sobczyk	Aphi-210	11.09.2024
14.201694	collection by Thomas Sobczyk	Aphi-172	30.07.2024
14.201111	collection by Thomas Sobczyk	Aphi-209	09.09.2024
14.675111	collection by Thomas Sobczyk	Aphi-175	01.08.2024
14.376278	collection by Thomas Sobczyk	Aphi-178	01.08.2024
14.376083	collection by Thomas Sobczyk	Aphi-180	01.08.2024
14.375528	collection by Thomas Sobczyk	Aphi-181	01.08.2024
14.375361	collection by Thomas Sobczyk	Aphi-176	01.08.2024
14.399833	collection by Thomas Sobczyk	Aphi-185	13.08.2024
14.243611	collection by Thomas Sobczyk	Aphi-194	21.08.2024
14.578333	collection by Thomas Sobczyk	Aphi-198	28.08.2024
13.958444	collection by Thomas Sobczyk	Aphi-199	02.09.2024
14.035167	collection by Thomas Sobczyk	Aphi-207	09.09.2024
14.457917	collection by Thomas Sobczyk	Aphi-211	12.09.2024
14.401306	collection by Thomas Sobczyk	Aphi-212	
-0.715726	coll. MNHN, no. 17568, 17569, 17570	17568	13.11.1956

of the current range of *Alnus glutinosa* (green area)





optical, arbicolous aphid species

ecological data of observed colonies	
host plant	ant species
<i>Alnus glutinosa</i>	<i>Myrmica rubra</i>
<i>Betula sp.</i>	<i>Lasius umbratus</i>
<i>Alnus glutinosa</i>	<i>Lasius niger</i>
<i>Alnus glutinosa</i>	<i>Lasius emarginatus</i>
<i>Alnus glutinosa</i>	<i>Lasius brunneus</i>
<i>Alnus glutinosa</i>	<i>Lasius emarginatus</i>
<i>Alnus glutinosa</i>	<i>Lasius fuliginosus</i>
<i>Alnus glutinosa</i>	<i>Lasius platythorax</i>
<i>Alnus glutinosa</i>	<i>Lasius platythorax</i>
<i>Alnus glutinosa</i>	<i>Lasius niger</i>
<i>Alnus glutinosa</i>	<i>Lasius niger</i>
<i>Alnus glutinosa</i>	<i>Lasius platythorax</i>
<i>Alnus glutinosa</i>	<i>Lasius fuliginosus</i>
<i>Alnus glutinosa</i>	<i>Lasius fuliginosus</i>
<i>Alnus glutinosa</i>	<i>Lasius niger</i>
<i>Alnus glutinosa</i>	<i>Lasius brunneus</i>
<i>Alnus glutinosa</i>	<i>Lasius emarginatus</i>
<i>Alnus glutinosa</i>	<i>Lasius brunneus</i>
<i>Alnus glutinosa</i>	<i>Lasius brunneus</i>
<i>Alnus glutinosa</i>	







